



Bold visions for building financial well-being

May 9, 2018

Hannah Moffatt
Population Health Equity Initiatives Leader
Winnipeg Regional Health Authority



Winnipeg Regional
Health Authority
Caring for Health

Office régional de la
santé de Winnipeg
À l'écoute de notre santé



WHAT MAKES CANADIANS SICK?

50%

YOUR LIFE

- INCOME
- EARLY CHILDHOOD DEVELOPMENT
- DISABILITY
- EDUCATION
- SOCIAL EXCLUSION
- SOCIAL SAFETY NET
- GENDER
- EMPLOYMENT/WORKING CONDITIONS
- RACE
- ABORIGINAL STATUS
- SAFE AND NUTRITIOUS FOOD
- HOUSING/HOMELESSNESS
- COMMUNITY BELONGING

25%

YOUR HEALTH CARE

- ACCESS TO HEALTH CARE
- HEALTH CARE SYSTEM
- WAIT TIMES

15%

YOUR BIOLOGY

- BIOLOGY
- GENETICS

10%

YOUR ENVIRONMENT

- AIR QUALITY
- CIVIC INFRASTRUCTURE

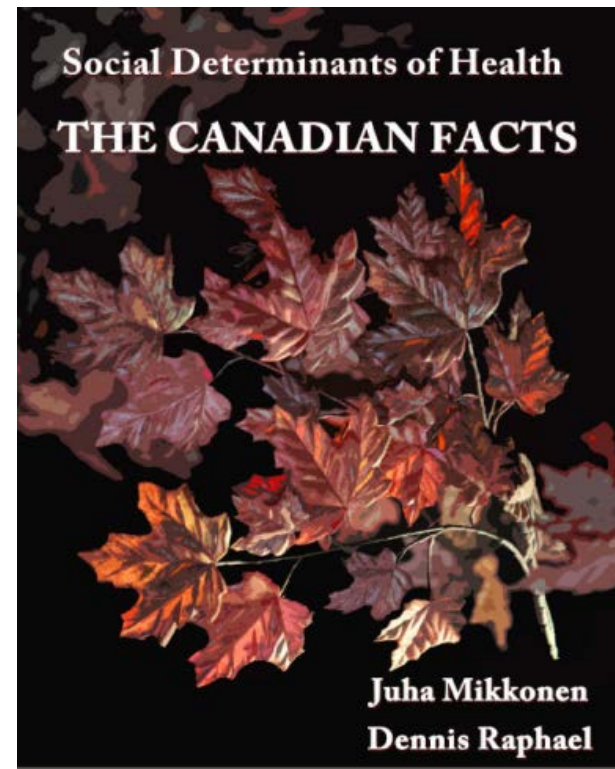


THESE ARE CANADA'S SOCIAL DETERMINANTS OF HEALTH #SDOH

“Your Life”

AKA: Social Determinants of Health

1. Income and Income Distribution
2. Education
3. Unemployment and Job Security
4. Employment and Working Conditions
5. Early Childhood Development
6. Food Insecurity
7. Housing
8. Social Exclusion
9. Social Safety Network
10. Health Services
11. Aboriginal Status
12. Gender
13. Race
14. Disability

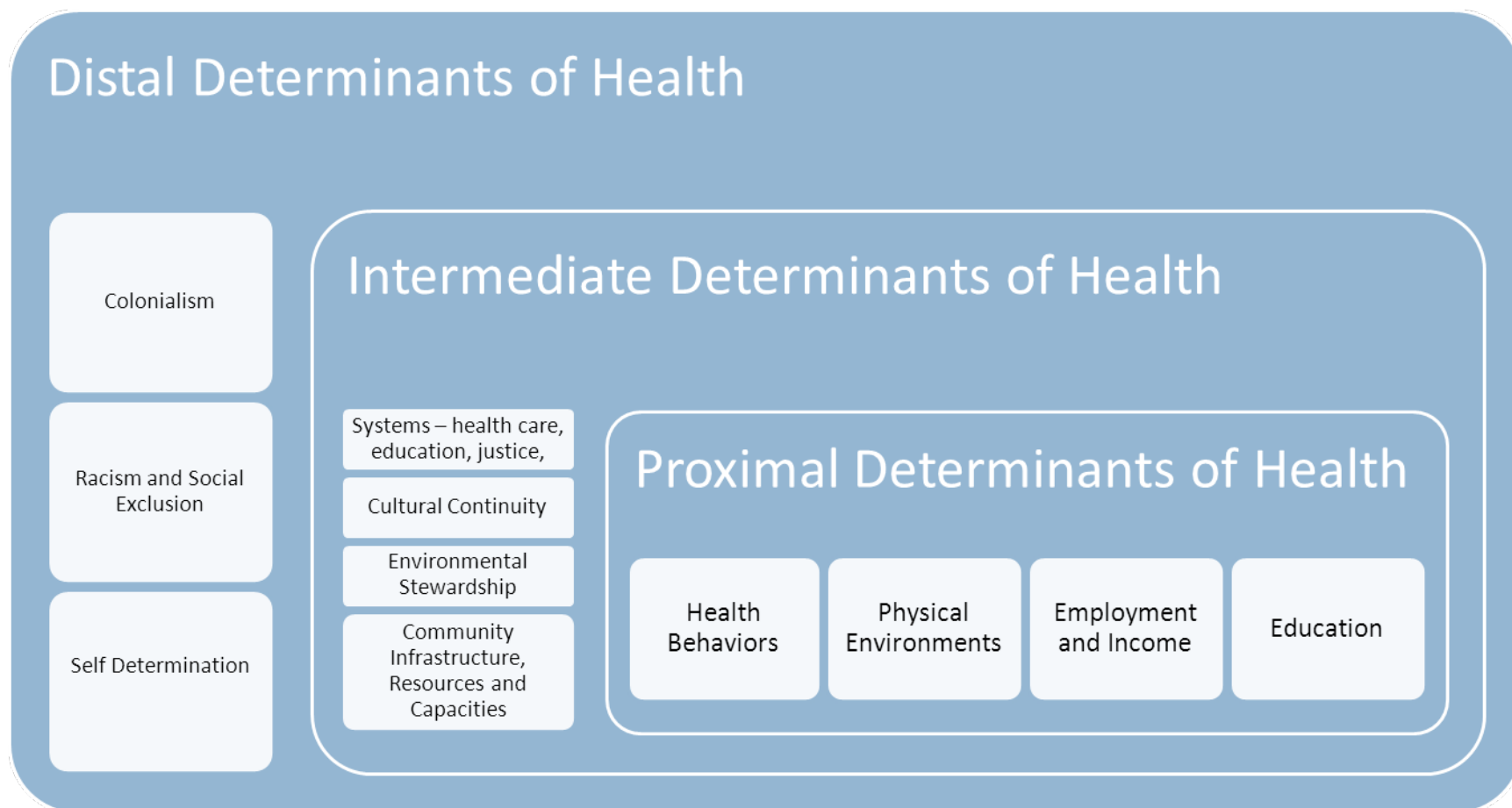


<http://nccdh.ca/resources/entry/social-determinants-of-health-the-canadian-facts>

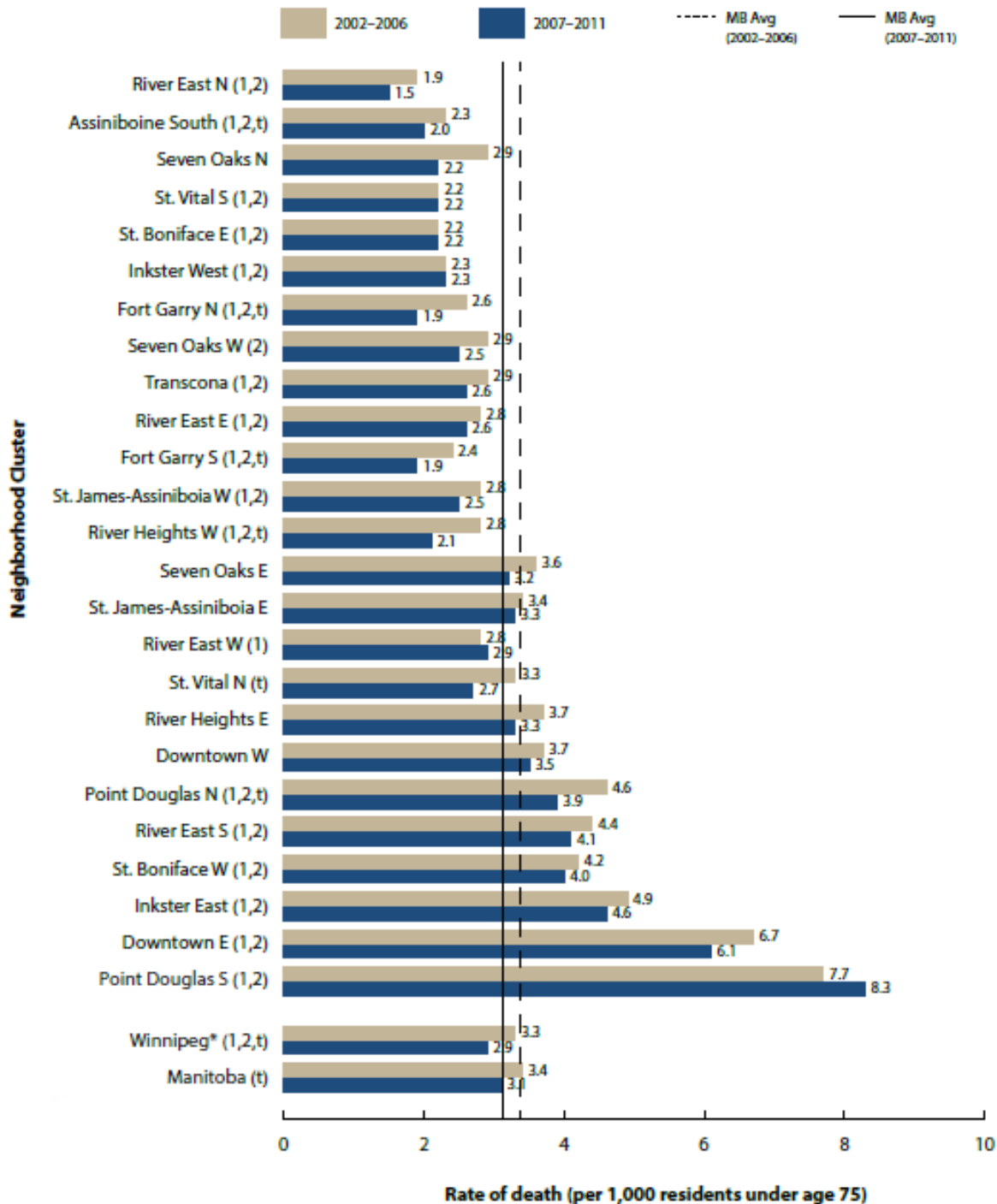
Social Determinants of Health



Indigenous Determinants of Health



Reading & Wien. (2008). Available at: <https://www.cnsa-nccah.ca/docs/determinants/RPT-HealthInequalities-Reading-Wien-EN.pdf>

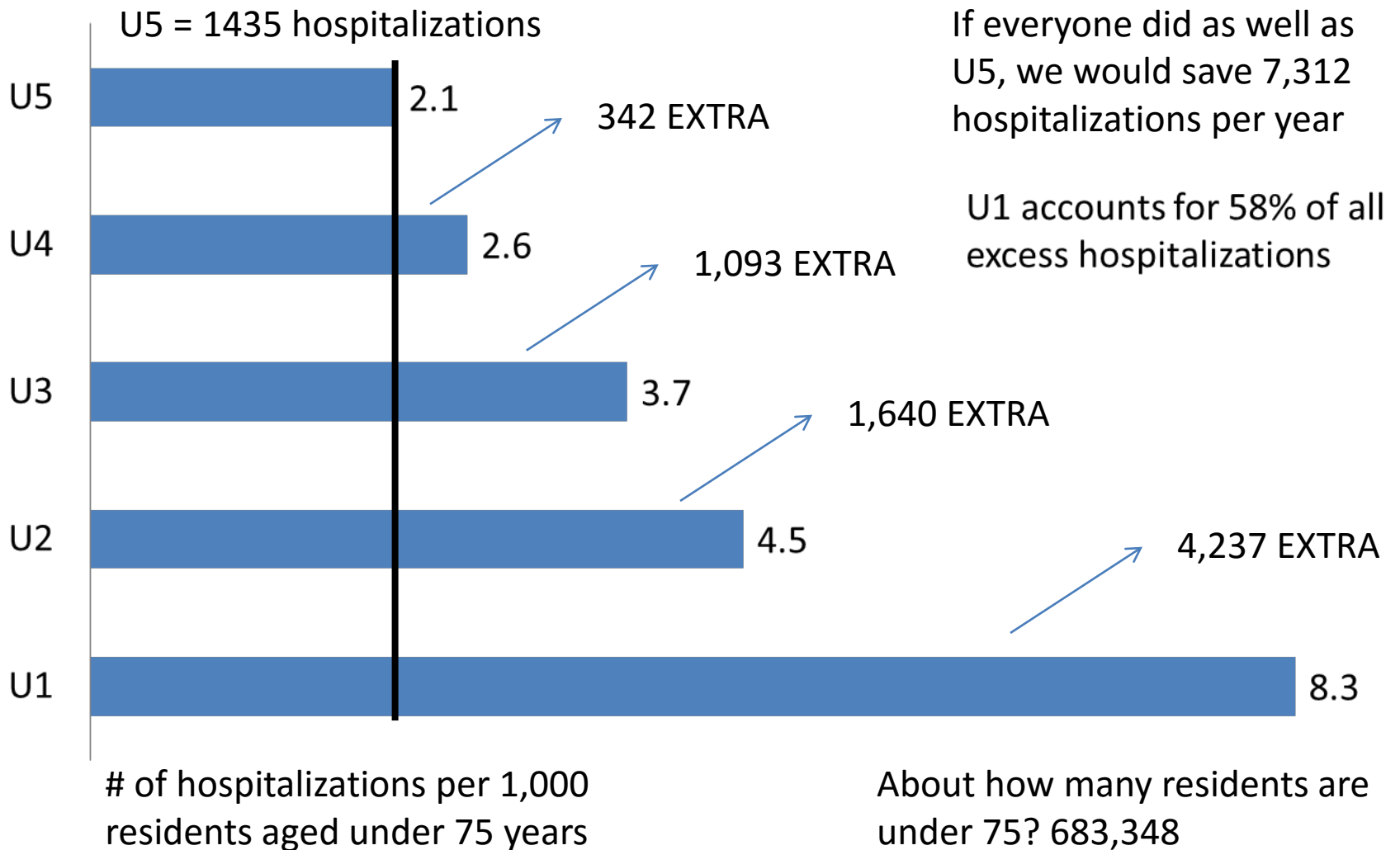


Premature mortality rate (PMR) by Winnipeg Neighborhood Cluster

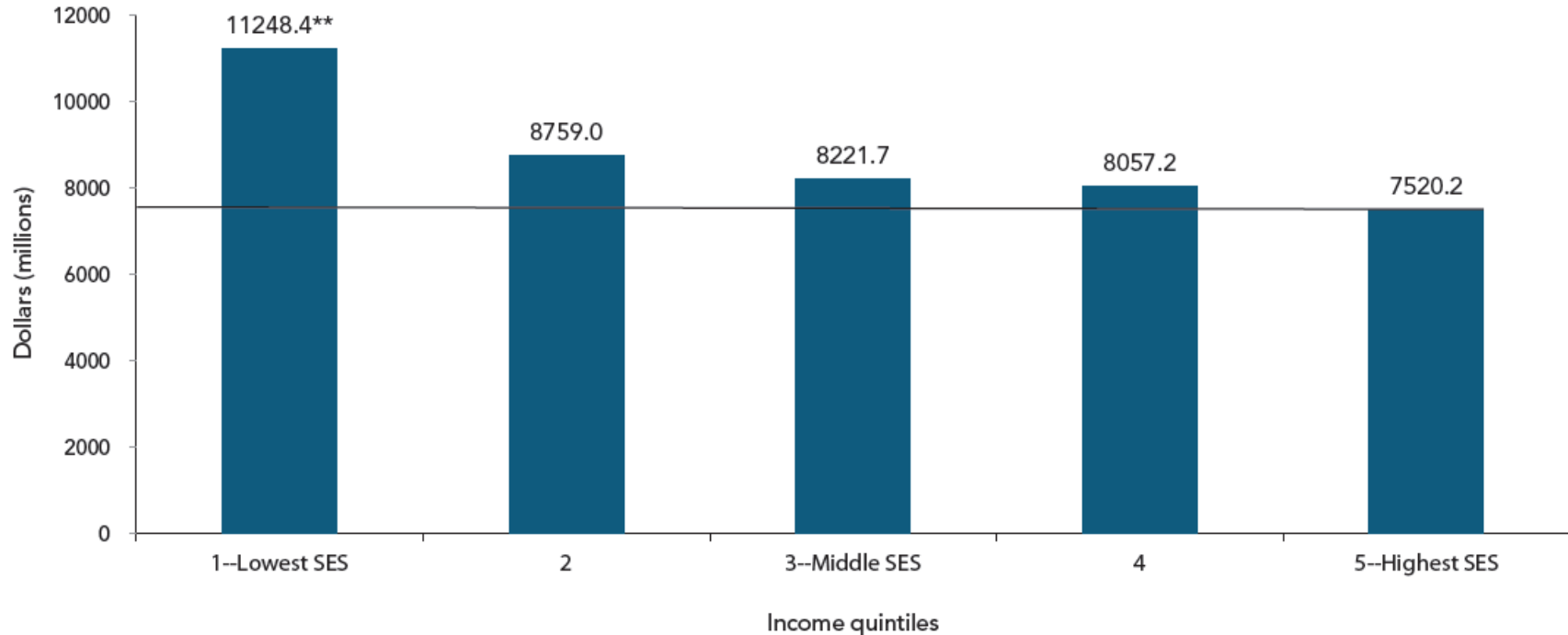
Age- & sex adjusted annual rate of death before age 75 (per 1,000 residents), 2002-2006 & 2007-2011

WRHA 2014. Community Health Assessment. Available at: <http://www.wrha.mb.ca/research/cha2014/index.php>

Hospitalizations for Ambulatory Care Sensitive Conditions by Income Quintile



Estimated direct economic burden in total age-standardized health care costs

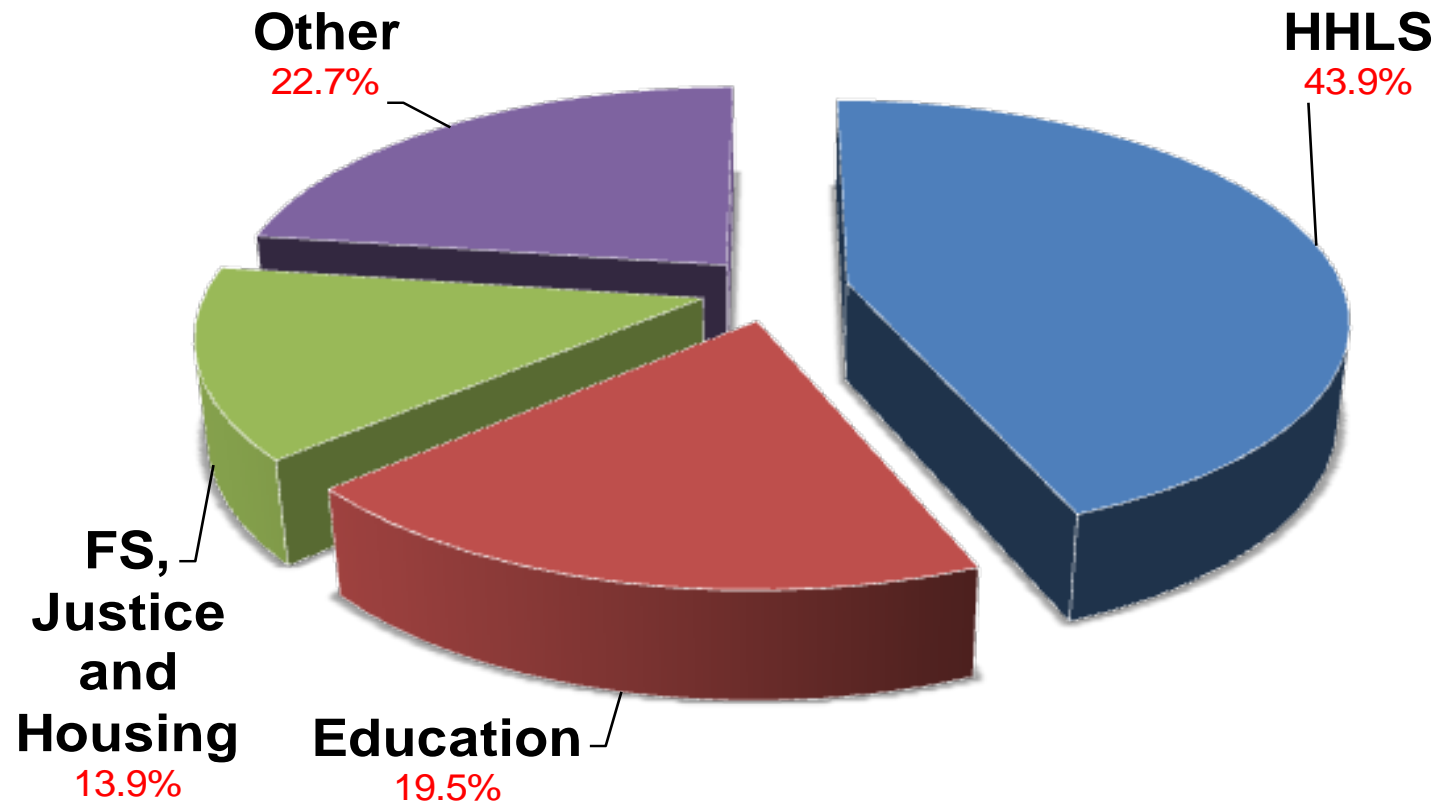


“Canadians in the lowest income group account for 60% of the total direct economic burden.”

Public Health Agency of Canada. (2016). Available at:

http://vibrantcanada.ca/files/the_direct_economic_burden_-_feb_2016_16_0.pdf

Manitoba Budget 2015



Source: 2015 Manitoba Estimates of Expenditure and Revenue for the Fiscal Year Ending March 21, 2016 as Presented to the Fourth Session, Fortieth Legislature by The Honourable Greg Dewar Minister of Finance. As accessed Nov. 13/15 via http://www.gov.mb.ca/finance/budget15/papers/r_and_e.pdf

Health equity means all people have a fair opportunity to reach their full health potential and are not disadvantaged by social, economic and environmental conditions.

Health inequities are rooted in unequal social relations, such as gender inequity, racism, and social and economic exclusion



Health improves as advantage increases.

Winnipeg Regional Health Authority



- Health Equity Position Statement (Dec 2012)
- Health for All: Building Winnipeg's Health Equity Action Plan (June 2013)
- Committees & Working Groups (2012–present)
- Equity in WRHA 2016-2021 Strategic Plan



Goal: *shift organizational culture*



Equitable Care for All



EQUITY - promote conditions in which every person can achieve their full health potential

<http://www.wrha.mb.ca/about/healthequity>

“What Can I Do?”


Health Equity in Clinical Care Brainstorming Tool




Individual Care & Support

**IT'S A FACT:
BETTER INCOME
CAN LEAD TO
BETTER HEALTH**

**GET YOUR
BENEFITS!**



THE MANITOBA
COLLEGE OF
FAMILY PHYSICIANS



LE COLLÈGE DES
MÉDECINS DE FAMILLE
DU MANITOBA

A CHAPTER OF THE COLLEGE OF FAMILY PHYSICIANS OF CANADA
UNE SECTION DU COLLÈGE DES MÉDECINS DE FAMILLE DU CANADA

Single parent, 2 children ages 2 & 4,
living in private rental market. Employed part time.
Annual employment income **\$15,000**

GST Refundable Credit (\$210.50 paid quarterly)	\$842
Canada Child Benefits (\$1066.66 paid monthly)	\$12,800
Working Income Tax Benefit (with refund OR part paid quarterly)	\$1,844
MB Rent Assist Benefits (\$465.50 paid monthly)	\$5,586
MB Child Benefit (\$35.00 paid monthly)	\$840
MB Personal Tax Credit (refund upon tax filing)	\$266
Total Additional Benefits*	\$22,176
TOTAL ANNUAL INCOME	\$37,178

BETTER INCOME LEADS TO BETTER HEALTH

HAVING TROUBLE MAKING ENDS MEET?

FILE YOUR TAXES
You could unlock HUNDREDS or THOUSANDS of dollars in credits and benefits!

LET CONNECT YOU TO HELP.

JUST SAY

THE FOUNDATION FOR GOOD PEOPLE COMMUNITY UNIVERSITY OF MANITOBA



Winnipeg Regional
Health Authority
Caring for Health

Office régional de la
santé de Winnipeg
À l'écoute de notre santé

University of Manitoba – Rady Faculty of Health Sciences

www.getyourbenefits.ca

System Advocacy



- Informing public consultations
- Framing public policy issues as health issues
- Developing relationships
- Working in partnership


upstream

REFRAMING *is* Social Change

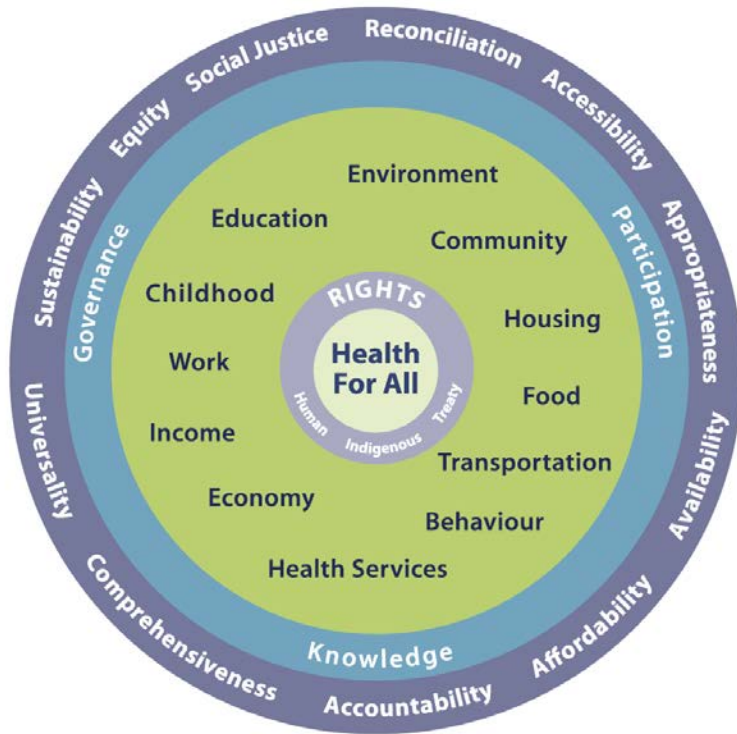
www.thinkupstream.net/



Winnipeg Regional
Health Authority
Caring for Health

Office régional de la
santé de Winnipeg
À l'écoute de notre santé

Baum (2007). Cracking the nut of health equity. Available at:
http://www.who.int/social_determinants/resources/csdh_media/baum_iuhpe_07.pdf



● Principles ● Strategies ● Areas for Action

Hannah Moffatt
hmoffatt2@wrha.mb.ca

www.wrha.mb.ca/about/healthequity/

